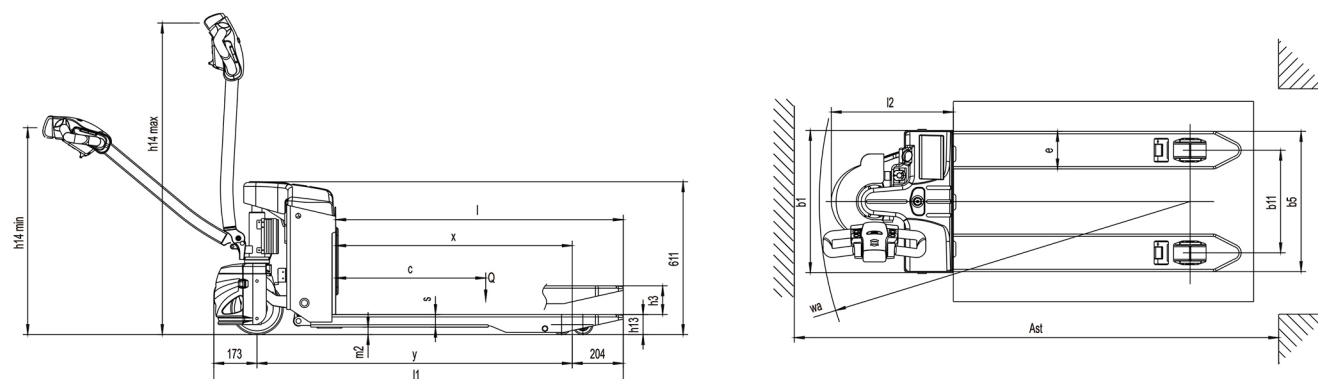


SINOLIFT is dedicated to providing you with the highest quality products at the best possible price, with best possible service. With a long and trust reputation in the industry, SINOLIFT is a name you can rely on.

Characteristics					
1.1	Manufacturer		SINOLIFT		
1.2	Model designation		EPT20-15ET	EPT20-20ET	EPT20-30ET
1.3	Drive Unit		Battery	Battery	Battery
1.4	Operator Type		pedestrian	pedestrian	pedestrian
1.5	Load capacity	Q (kg)	1500	2000	3000
1.6	Load center	c (mm)	600	600	600
1.7	Load distance	x	883/946	883/946	877/940
1.8	Wheelbase	y	1202/1261	1202/1261	1206/1264
Weight					
2.1	Service weight (Incl. battery)	kg	164	200	1400
2.2	Axle loading, laden driving side/loading side	kg	536/1128	536/1128	2235/1165
2.3	Axle loading, unladen driving side/loading side	kg	124/40	124/40	263/137
Wheels, Chassis					
3.1	Tyre type, operator side/ load side		PU/PU	PU/PU	PU/PU
3.2	Tyre size,driving wheels (Diameter x width)	mm	Φ210x75	Φ210x75	Φ250x80
3.3	Tyre size,loading wheels (diameter x width)	mm	2 X Φ80x60	2 X Φ80x60	4 X Φ85x65
3.4	Tyre size,caster wheels (diameter x width)	mm	//	//	//
3.5	Wheels, number operator/load side (x=drive wheels)	mm	1 x/4(1x/2)	1 x/4(1x/2)	1 x/4(1x/2)
3.6	Track width, front,driving side	b10 (mm)	448	448	520
3.7	Track width, rear,loading size	b11 (mm)	410(535)	410(535)	482(597)
Dimensions					
4.1	Lift height	h3 (mm)	115	115	115
4.2	Height drawbar in driving postion Min./Max.	h14(mm)	750/1170	750/1170	750/1200
4.3	Fork height, lowered	h13 (mm)	80	80	85
4.4	Overall length	l1 (mm)	1638	1638	1810
4.5	Length to face of forks	l2(mm)	488	488	590
4.6	Overall width	b1/ b2 (mm)	560(685)	560(685)	694
4.7	Fork dimensions	s/ e/ l (mm)	50/150/1150	50/150/1150	60/160/1220
4.8	Fork spread, min/ max	b5 (mm)	560(685)	560(685)	560(685)
4.9	Ground clearance,center of wheelbase	m2(mm)	30	30	31
4.10	Aisle width, 1000×1200 pallet crossways	Ast (mm)	1739	1739	1840
4.11	Aisle width, 800×1200 pallet crossways	Ast (mm)	1939	1939	1950
4.12	Outer turning radius	Wa (mm)	1485	1485	1780
Performance					
5.1	Travel speed, laden/ unladen	km/ h	4/4.5	4/4.5	4/4.5
5.2	Lifting speed, laden/ unladen	m/ s	0.027/0.038	0.027/0.038	0.027/0.038
5.3	Lowering speed, laden/ unladen	m/ s	0.059/0.039	0.059/0.039	0.059/0.039
5.4	Maximum gradeability, laden/ unladen S2 5 min.	%	5/16	5/16	6/10
5.5	Service brake		Electromagnetic	Electromagnetic	Electromagnetic
Drive					
6.1	Drive motor rating S2 60 min.	kW	0.65	0.75	1.5
6.2	Lift motor rating at S3 15%	kW	0.84	0.84	1.5
6.3	The maximum allowed size battery	mm	265*185*215	265*185*215	330*170*215
6.4	Battery voltage/ rated capacity (5h)	V/ Ah	2x12/65	4x12/30	2x12/100
6.5	Battery weight	kg	2x22.5	4x14	2x36
Others					
7.1	Type of drive control		DC	DC	AC
7.2	Steering type		Mechanical		
7.3	Sound level at operator's ear	dB (A)	70		



Special size of width and length can be made according to customer's requirement, All specifications and figures are subject to change without notice for improvement.



EPT20-15 EPT20-20ET EPT20-30ET
FULL ELECTRIC PALLET TRUCK
ISO9001
CE



Easy Lift, Easy Life!

1500/2000/3000KG LOAD CAPACITY
3300/4400/6600LBS LOAD CAPACITY

EPT20 is an economic pedestrian pallet truck, is an ideal solution for light application. Today, labor costs are becoming more and more expensive. this entry-level electric truck can save more cost. More safety in the climbing, bumpy road conditions.

- Small size, light service weight, simple operation.
- Energy-saving and environmental, lower cost.
- More convenient for maintenance.



SHANGHAI SINOLIFT EQUIPMENT CO., LTD.

ADDRESS: No. 2471 Dachuan Road, Nanhui Industry Park, Pudong New District, Shanghai, 201399, P.R.China

Tel: 0086-21-68014500 or 0086-21-58003681

Fax: 0086-21-68014262

Website: www.sinolift.com www.sinoliftchina.com

Skype: sinolift

Whatsapp & Mobile: 0086 138 1757 2420





Custom non-standard



• Electric Pallet Truck (extension fork)



• Electric Pallet Truck (electronic weighing)



• Electric Pallet Truck (paper roll truck)



• Electric Pallet Truck (narrow legs can be added to the auxiliary wheel)



• Electric Pallet Truck (can be customized to lengthen, widen, shrink)

The EPT20 series mini walkie pallet truck has been engineered to be both powerful and flexible to meet the requirements of many demanding applications. Whether it's supermarket work, delivery service, stock replenishment or heavy manufacturing.

The EPT20 series mini walkie pallet truck has the strength and durability to minimise your total cost of ownership.

Customer Minded Design

Safety

Low skirt design to effectively the feet, long tiller mounted on the low position ensures enough safety distance between the truck and the driver. Emergency brake button to ensure safety in an emergency.

Performance

High-power drive motor, providing a strong driving force for the truck, low energy consumption to ensure a longer working time. Built-charger provides more convenient operation, charger anywhere. The thick chassis to ensure the steering stability.

Comfort

Ergonomic tiller and button design, make our driving more comfortable. Standard creep-speed button and compactness chassis design for easy and precise control even in tight spaces.

Reliability

Reinforced forks to ensure that no deformation with 1.5T load capacity, reliable and stable. Robust metal cover protects the drive unit, also provides safety protection on feet. Achieve an optimal quality and reliability.

Service

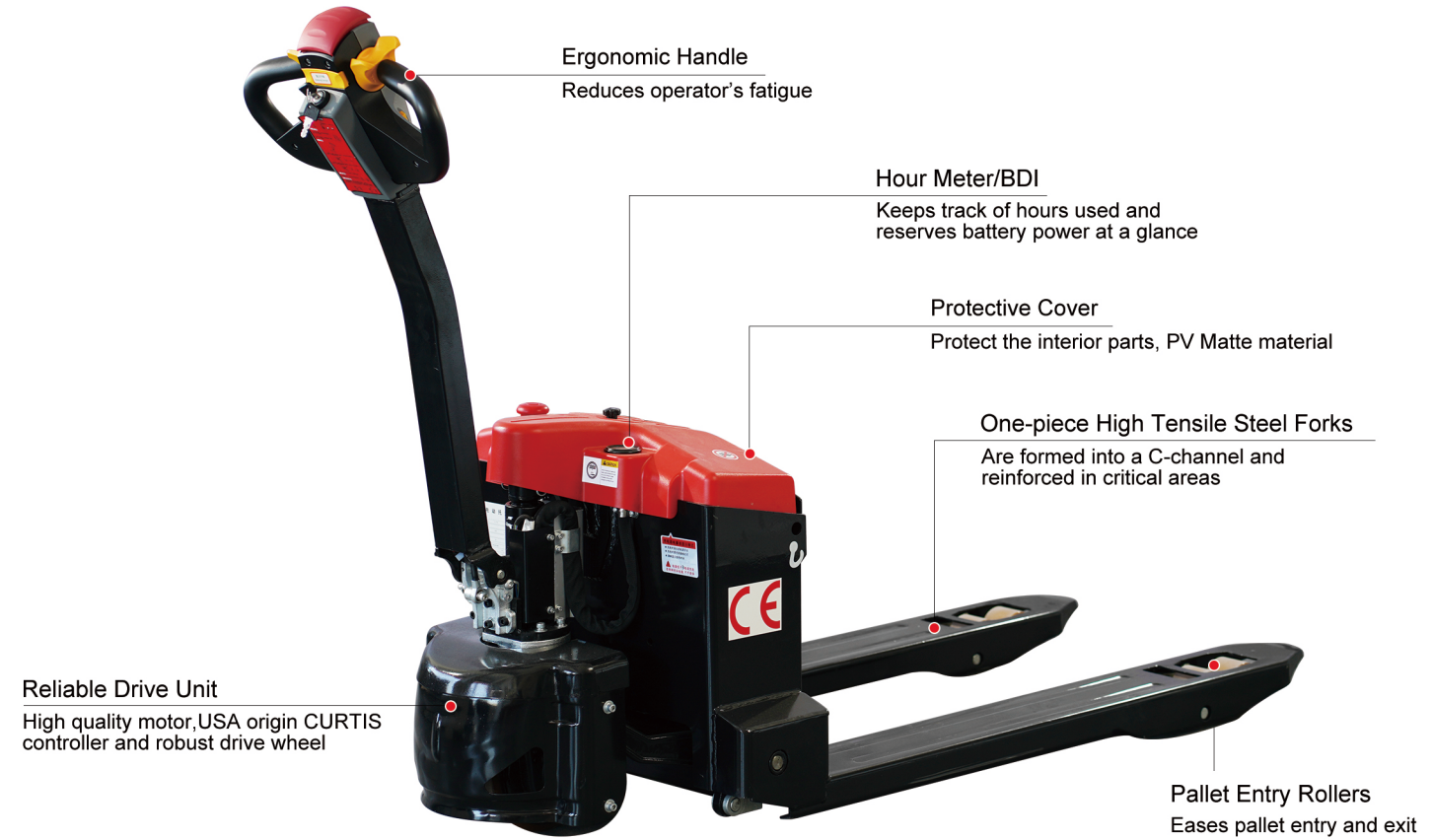
All the performance parameters can be configured easily to match the requirements of the customer's application.

Standard Specification

- Permanent magnet brushless drive motor (3.0T)
- Permanent magnet drive motor (1.5T and 2.0T)
- Multi-function tiller
- VIBO hydraulic power unit
- Emergency power off switch
- Maintenance-free gel battery
- Built-in charger
- Battery meter
- PU wheels
- Fork length 1150mm or 1220mm
- Outer distance of forks 560mm or 685mm
- Electronic lifting limit
- Non-contact interlock switch
- Modular tiller
- Electric horn
- Upright-tiller creep speed running
- Guide fork for closed-deck pallets
- Auxiliary wheels (3.0T)
- Double load wheels
- Automatic sleep function

Options

- Various fork lengths
- Various fork widths
- Triangle diamond fork for roll handling
- Severe freezer/food processing package
- Single load wheel
- Balance wheel
- Stand-on pedal
- Various brand and capacity battery
- High-performance lithium-ion battery
- Load backrest
- Weighting system with/without printer
- Creep control (tight area maneuvering)
- Operator convenience tray
- Multi-function display with hour meter discharge indicator and status code readout
- Super low 35mm, 51mm and 75mm distance from fork surface to ground
- Single load wheel
- PIN lock



External Control System

Ergonomic multifunction handle control can be equipped with push button functions, emergency safety reversing and large central horn button for safe operation.



Reinforced One-piece Fork

Entry rollers are available in a rugged steel roller design or polyurethane to minimize pallet wear. Smooth, rounded fork tips help ensure proper alignment upon entry.



Charger

Upper-installed charger, Better heat-exhausting, Higher charging efficiency.



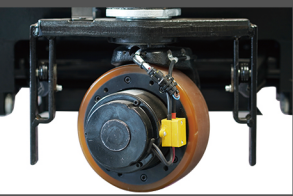
Protective Cover

Protect the interior parts, PV Matte material, Including power meter and emergency switch.



High-capacity Battery

With high-capacity storage battery, the pallet truck can be used for a longer time.



Strong Driving Wheel

The strong driving wheel provides the continuous power for the palletizing work.