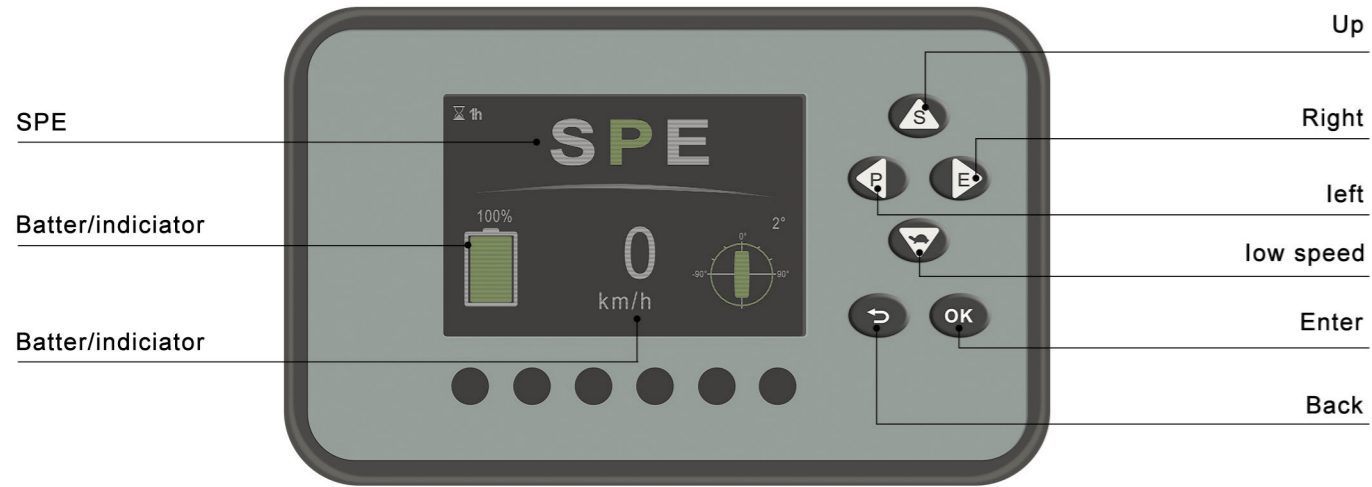


# Reliable special designed instrument

Reliable special meter display the whole truck's working condition, fault detect and other important information completely which make the operator master the whole truck condition directly and conveniently.



## Safety

The optimized design of the wide-view mast, wide-view overhead guard and low dashboard enables a broader view of the operator and higher safety.

## Comfort

In accordance with the ergonomically design, the wheelbase is increased to enable enlarged leg space. The radius of the hand wheel is reduced to 300mm and the seat can be adjusted backwards and forwards, so that the operator can choose the best driving position.

## Exterior

A new exterior design method is used to form a stylish and elegant exterior with streamlined curved surfaces and smooth ethereal lines. The vehicle is compact, simple and sturdy in appearance. A fully enclosed console space. Fully open side door

## Stability

The drive motor is arranged in parallel, the battery is placed at the bottom of the vehicle frame, the wheelbase and rear wheel pitch are increased, the swing point of the steering axle is raised, and the distance between the front of the fork and the front axle is reduced, to enable excellent stability.

## Maintainability

The fully opened hood quite facilitates the maintenance of the battery, oil pump motor and electric control assembly.

## Advancement

The high-frequency MOSFET integrated controller ensures smooth and accurate driving and lifting control, and has excellent speed regulation performance, good performance of electronic control matching the motor, functions of regenerative braking, reverse braking and anti-sliding on ramps, etc., and high safety and reliability.

## Maintenance Free

- Unnecessary of fluid adding and dust proofing.
- Daily maintenance free
- Manual maintenance free.

## High Reliability

- High IP protection Level of vehicle
- Maintenance-free integrated axle which is mature and has been tested by market is used on the truck.
- Oil cooled wet disc type brake is free from maintenance.
- Maintenance-free AC motors are used for driving and pump motors.
- World famous controller is used.
- Large smart instrument can monitor the truck state overally and it is safe and reliable.

## Long Service Life

- Over 75% capacity reserved after 4000 shifts operation.
- Longer service life than lead-acid battery in equal working condition.
- 5 years or ten thousand hours quality guarantee for high performance lithium battery assembly.

## High Safety

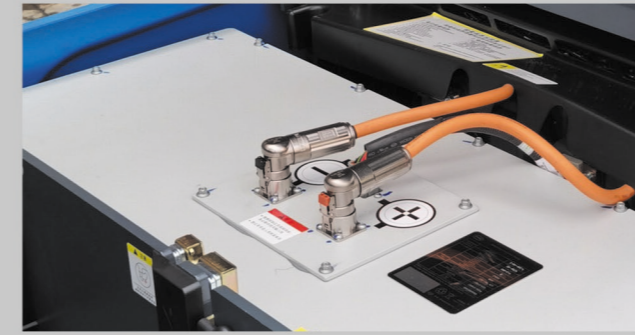
- Tail-free structure reduces the center of gravity and improves lateral stability.
- High strength and integrated type welded overhead guard improves safety.
- Side-pulling battery changing way is standard configuration and improves battery changing efficiency.
- Middle-positioned battery reduces the center of gravity and improves stability.
- Automatic deceleration when steering improves working safety, mast lifting buffering improves operation safety.

## Curtis controller



Original imported brand controller, after professional adjustment, precise and efficient walking and lifting control, excellent performance, with functions such as regenerative braking,

## Now available with Li-ION technology

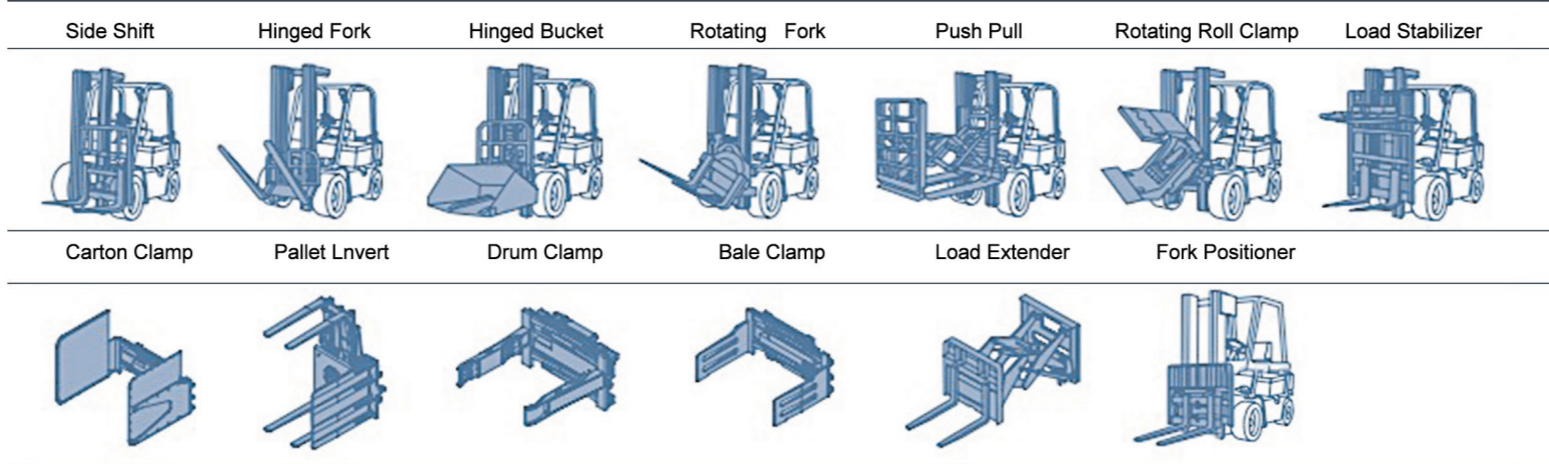


With completely maintenance- and emission-free Li-ION batteries, there are no limits. These batteries offer lower energy consumption, higher utilization and flexible charging, any time and anywhere.

## Main Advantages:

<b>Compact body</b> energy density more than 120Wh/kg	<b>Operating temperature</b> Charge: 0-45°C Discharge: 20-60°C	<b>Control system</b> With BMS management system, it can monitor the current, voltage, temperature, SOC and other conditions of each battery pack. With self-protection.	<b>Fast charging</b> 2-4 hours quick charge, no memory effect.
<b>Long service life</b> >2500 times (80% remaining capacity), the service life more than 5 years or 10000 hours	<b>5 years guarantee</b>	<b>Maintenance free</b>	<b>High safety and reliability</b>
<b>High charge efficiency</b> >97%	<b>Impact of environment</b> zero pollution		

## Various Attachments



## Standard

- AC electric control motor
- Emergency power o switch
- Multifunctional color-screen instruments
- Pneumatic tire
- Mechanical handbrake
- Two-way multi-way valve
- Rubber pedal pads of all sizes
- 3 m duplex wide-field-of-view mast
- Vehicle LED lights
- Panoramic rear view mirror
- Fully hydraulic power steering
- Angle-adjustable steering column
- Horn, reversing buzzer
- Load sensing steering system
- Turning deceleration function
- Silent gear pump
- Intelligent descending buffering device
- Traction

## Options

- Super-elastic solid tire
- Seamless solid tire
- Triple and quadruple multiway valves
- Alarm light
- Rear LED operation light
- Blue light
- Rear reversing armrest horn button
- Large-capacity battery
- PVC ceiling
- Battery charger
- Chair sensing system
- Electro-hydraulic proportional valve, thumb switch
- Video monitoring system
- Fully-suspended seat
- Fully enclosed cab
- Left and right rear view mirrors
- Free duplex mast
- Free triplex mast
- Built-in side shift fork
- Forks of other lengths
- Widened fork carriage
- Other attachments
- Battery removed sideways
- Dedicated lithium battery charger (Titan or Schneider)
- Cold storage vehicle
- Double front wheels
- Fire extinguisher
- High and low overhead guards
- Toolbox, folder
- OPS seat sensing function
- Start with a PIN code or by swiping a card

**SINOLIFT**  
For material handling

**CPD40M CPD45M CPD50M**  
FOUR WHEEL ELECTRIC FORKLIFT  
ISO9001  
CE



*Easy Lift, Easy Life!*

## Maximise productivity, Best for reliability & safety

The M series 4.0-5.0T forklift comes with brushless and maintenance-free AC Traction motor and AC Pump motor. An interactive communication system and multi-function LED meter with a user-friendly interface puts all the information you need at your fingertips. Travel and braking speeds are easy to control and the forklift has self-braking while traveling on ramps. Its hydraulic system also comes with new and improved signal load-sensing technology.

- Rated Load Capacity: 4-5.0 Ton (8800-11000lbs)
- Full AC System and wet disc brakes offer high energy efficiency with very low maintenance costs.
- Designed to work in harsh environment with moisture, heat and dust.
- Powerful, Twin drive motors promise high level of performance and productivity.
- Highly energy efficient for long working shifts in demanding operations
- Excellent visibility of the fork tips at any height for safe and confident driving and load handling.
- Strong construction and proven components
- Industry-leading speeds



## SHANGHAI SINOLIFT MECHANICAL AND ELECTRICAL EQUIPMENT CO.,LTD

Address: No. 2471 Dachuan Road, Nanhui Industry Park, Pudong New District, Shanghai, 201399,P.R.China

Tel: 0086-21-68014500 or 0086-21-58003681

Fax: 0086-21-68014262

Website: [www.sinolift.com](http://www.sinolift.com) [www.sinolifttruck.com](http://www.sinolifttruck.com)

Skype: sinolift

Whatsapp & Mobile: 0086 138 1757 2420



# TOUGH, POWERFUL, HIGH CAPACITY ELECTRIC FORK LIFT TRUCKS WITH A LOW COST OF OPERATION

The 4-5Ton electric forklift is suitable or use both indoors and outside, this series of tough electric trucks is ideal for use by a number of industries including automotive, timber, metal, beverage, paper, bottling and many more.

## BLUE PEDESTRIAN AWARENESS LIGHT (PAL)\*

Provides an alert to pedestrians and users of mobile equipment that forklifts are operational in the area.

## OPERATOR COMFORT

A refined operator's compartment provides ease of access and driver comfort.

## OPTIMISED MAST VISIBILITY

The inner mast clearance (between the hoist chains) provides ample visibility to enhance operator efficiency.

## INTERACTIVE DASH DISPLAY

Interactive dash display shows the most relevant information to the truck's current status.

## CARRIAGE LIGHT\*

Directs a light onto the load and racking to illuminate the workspace while working at heights.

## REGENERATIVE BRAKING

AC controlled motor sends power back to the battery during braking, increasing uptime.



## DROP BATTERY BOX

Battery located at the lower back region of the truck to improve layout and accessibility of motors and controllers.

## TRAVEL AND HYDRAULIC HANDLING INTERLOCK

Battery located at the lower back region of the truck to improve layout and accessibility of motors and controllers.

## SYNCHRONOUS AND POWER ASSIST STEERING

Alignment between the rotation of the steering wheel and steer tyres, enabling the steering wheel to always return to the same position.



### Fully hydrostatic power steering for excellent maneuverability

It features a small-diameter steering wheel with an ergonomically optimized design. The fully hydrostatic power steering mechanism provides excellent maneuverability in the switchback operations. The steering knob synchronizer function is also included as a standard feature.



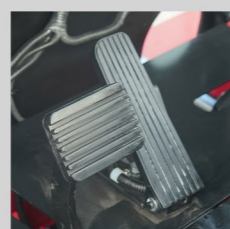
### Stability support system

The turn signal lever and lighting switch are integrated into one unit. It returns automatically to neutral when the steering wheel goes back to the straight-ahead position. Rear combination lights are located on the overhead guard for better visibility from behind in the workplace.



### Horizontal battery extraction\*

Optional horizontal extraction provides ease of access for battery removal/replacement to reduce downtime.



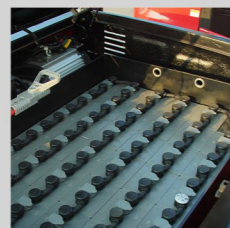
### Optimized pedal position and Anti Slippad

The position of accelerator and brake pedal have been optimized through human engineering.



### Panoramic rearview mirrors

Large panoramic mirror Provides the operator with a clear view of the rear working area, improving safety & efficiency.

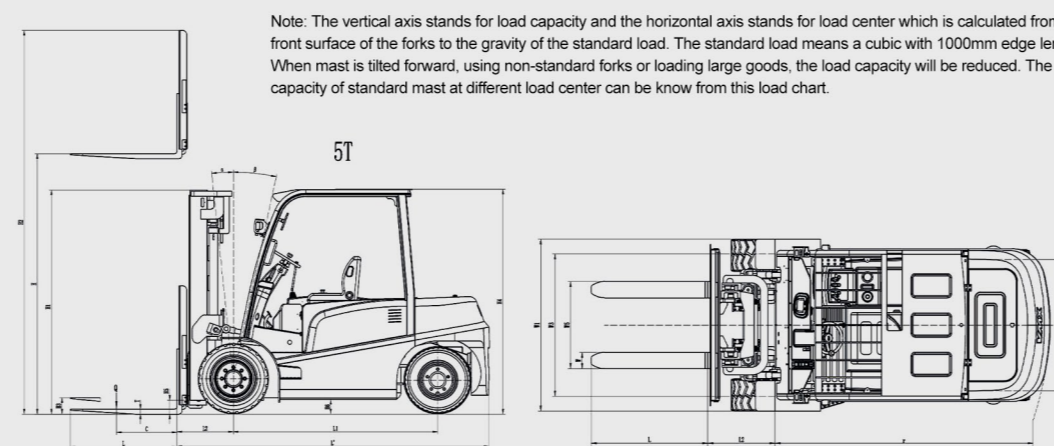


### Longer battery runtimes per charge

The long (8.5 hour) battery runtime on a single charge has been achieved by using a highly-efficient AC drive motor that draws less current, and various types of regenerative braking: switch-back, accelerator-off and braking regeneration.

Characteristic			SINOLIFT											
1.1 Manufacturer Brand			CPD40-MA1		CPD40-MA1Li		CPD45-MA1		CPD45-MA1Li		CPD50-MA1		CPD50-MA1Li	
1.2 Model			Acid Battery		Lithium Battery		Acid Battery		Lithium Battery		Acid Battery		Lithium Battery	
1.3 Power Type			Seated		Seated		Seated		Seated		Seated		Seated	
1.4 Operation Type			Seated		Seated		Seated		Seated		Seated		Seated	
1.5 Rated Capacity			Q	kg	4000	4000	4500	4500	5000	5000	5000	5000	5000	5000
1.6 Load Centre			c	mm	500	500	500	500	500	500	500	500	500	500
1.7 Front Overhang			L2	mm	520	520	565	565	565	565	565	565	565	565
1.8 Wheelbase			L1	mm	1800	1800	2050	2050	2050	2050	2050	2050	2050	2050
2.1 Mast Tilt Angle			α/β	°	6/12	6/12	6/12	6/12	6/12	6/12	6/12	6/12	6/12	6/12
2.2 Mast Lowered Height			H1	mm	2125	2125	2250	2250	2250	2250	2250	2250	2250	2250
2.3 Free Lift Height			H3	mm	150	150	150	150	150	150	150	150	150	150
2.4 Standard Mast Lift Height			H	mm	3000	3000	3000	3000	3000	3000	3000	3000	3000	3000
2.5 Mast Extended Height			H2	mm	4272	4272	4280	4280	4280	4280	4280	4280	4280	4280
2.6 Overhead Guard Height			H4	mm	2092	2092	2255	2255	2255	2255	2255	2255	2255	2255
2.9 Overall Length (Include Forks)			L	mm	3760	3760	4205	4205	4205	4205	4205	4205	4205	4205
2.10 Length to Face of Fork			L'	mm	2690	2690	3135	3135	3135	3135	3135	3135	3135	3135
2.11 Overall Width			W1	mm	1420	1420	1400	1400	1400	1400	1400	1400	1400	1400
2.12 Fork Size			TxWxL4	mm	50/125/1070	50/125/1070	50/150/1070	50/150/1070	50/150/1070	50/150/1070	50/150/1070	50/150/1070	50/150/1070	50/150/1070
2.13 Fork Type					ISO2328 3A	ISO2328 3A	ISO2328 3A	ISO2328 3A	ISO2328 3A	ISO2328 3A	ISO2328 3A	ISO2328 3A	ISO2328 3A	ISO2328 3A
2.15 Fork carriage spread width			W5	mm	250-1300	250-1300	300-1380	300-1380	300-1380	300-1380	300-1380	300-1380	300-1380	300-1380
2.16 Ground Clearance Under Mast Laden			H5	mm	130	130	140	140	140	140	140	140	140	140
2.17 Ground Clearance at Center of the Wheelbase			H6	mm	130	130	145	145	145	145	145	145	145	145
2.18 Min. Right Angle Stacking Aisle Width (Pallet 1000x1000)			Ast	mm	4250	4250	4845	4845	4845	4845	4845	4845	4845	4845
2.19 Min. Right Angle Stacking Aisle Width (Pallet 1200x1200)			Ast	mm	4450	4450	5045	5045	5045	5045	5045	5045	5045	5045
2.20 Turning Radius			r	mm	2550	2550	2172	2172	2172	2172	2172	2172	2172	2172
3.1 Service Weight				kg	5440	5340	6900	6900	7200	7200	7200	7200	7200	7200
3.2 Front Axle Rated Load Capacity with laden				kg	9415	9415	10200	10200	11210	11210	11210	11210	11210	11210
3.3 Rear Axle Rated Load with Laden				kg	1310	1310	1135	1135	1035	1035	1035	1035	1035	1035
3.4 Front Axle Rated Load Capacity with unladen				kg	3195	3195	3215	3215	3345	3345	3345	3345	3345	3345
3.5 Rear Axle Rated Load with unladen				kg	3505	3505	3620	3620	3865	3865	3865	3865	3865	3865
4.1 Tyre Type					Pneumatic	Pneumatic	Solid Tire	Solid Tire	Solid Tire	Solid Tire	Solid Tire	Solid Tire	Solid Tire	Solid Tire
4.2 Tyre Size (Front)					250-15-12PR	250-15-12PR	28x12.5-15	28x12.5-15	28x12.5-15	28x12.5-15	28x12.5-15	28x12.5-15	28x12.5-15	28x12.5-15
4.3 Tyre Size (Rear)					18x7-8-16PR	18x7-8-16PR	7.00-12	7.00-12	7.00-12	7.00-12	7.00-12	7.00-12	7.00-12	7.00-12
4.4 Wheel Number (x=Drive Wheel)					2x2	2x2	2x2	2x2	2x2	2x2	2x2	2x2	2x2	2x2
4.5 Front Tread				mm	1160	1160	1280	1280	1280	1280	1280	1280	1280	1280
4.6 Rear Thread				mm	970	970	1190	1190	1190	1190	1190	1190	1190	1190
5.1 Max. Travel Speed (Laden/Unladen)				km/h	12/13	12/13	13/14	13/14	13/14	13/14	13/14	13/14	13/14	13/14
5.2 Lifting Speed (Laden/Unladen)				mm/s	250/350	250/350	280/400	280/400	280/400	280/400	280/400	280/400	280/400	280/400
5.3 Lowering Speed (Laden/Unladen)				mm/s	<600	<600	<600	<600	<600	<600	<600	<600	<600	<600
5.4 Max. Gradeability (Laden)				%	14	14	15	15	15	15	15	15	15	15
5.5 Service Brake Type					Hydraulic	Hydraulic	Hydraulic	Hydraulic	Hydraulic	Hydraulic	Hydraulic	Hydraulic	Hydraulic	Hydraulic
5.6 Parking Brake Type					Mechanical	Mechanical	Mechanical	Mechanical	Mechanical	Mechanical	Mechanical	Mechanical	Mechanical	Mechanical
6.1 Drive Motor Rating S2 60min				kW	16.6	16.6	18	18	18	18	18	18	18	18
6.2 Lifting Motor Rating at S315%				kW	13.5	13.5	26	26	26	26	26	26	26	26
6.3 Battery Voltage/Capacity K5				V/Ah	"80/500(Max.600)"	"83.2/346(Max.405)"	"80/560(Max.600)"	"83.2/404(Max.460)"	"80/630(Max.700)"	"83.2/460(Max.505)"	"80/630(Max.700)"	"83.2/460(Max.505)"	"80/630(Max.700)"	"83.2/460(Max.505)"
6.4 Battery Weight				kg	"1240 (1240-1550)"	"1170 (1170-1550)"	"1265 (1265-1550)"	"1265 (1265-1565)"	"1565 (1565-1750)"	"1565 (1565-1750)"	"1565 (1565-1750)"	"1565 (1565-1750)"	"1565 (1565-1750)"	"1565 (1565-1750)"
7.1 Controller Brand					IMMOTION	IMMOTION	ZAPI/IMMOTION	ZAPI/IMMOTION	ZAPI/IMMOTION	ZAPI/IMMOTION	ZAPI/IMMOTION	ZAPI/IMMOTION	ZAPI/IMMOTION	ZAPI/IMMOTION
7.2 Hydraulic system working pressure				Mpa	20	20	20	20	20	20	20	20	20	20
7.6 Sound Level at Driver's Ear According to EN 12 053				dB	72	72	72	72	72	72	72	72	72	72

Note: "CPD" means full electric Counter-balanced Electric Forklift, "40/45/50" means rated load capacity 4T/4.5T/5.0T, "M" is serial code, "A" is equipped with full AC system, "J" is equipped with semi-AC system, "1" is serial code, "Li" is equipped with lithium-ion battery, "S" means battery can be roll side out.



# Mast size of 4.0-5.0T M Series Counterbalanced Electric Forklift

## 2-Stage High-Visibility Wide View Mast

Mast model	Lifting Height H	Load Capacity			Overall Height (Mast Lowered)			Max. Lifting Height (With backrest)			Free Lift			Mast Tilt Angle 4.0-5.0t (α/β)
		4.0t	4.5t	5.0t	4.0t	4.5t	5.0t	4.0t	4.5t	5.0t	4.0t	4.5t	5.0t	
		Q			H1			H2			H3			
2M200	2000	4000	//	//	1650	//	//	//	//	//	150	//	//	6/12
2M250	2500	4000	//	//	1900	//	//	//	//	//	150	//	//	6/12
2M270	2700	4000	//	//	2000	//	//	//	//	//	150	//	//	6/12
2M300	3000	4000	4500	5000	2150	4250	2250	4272	4280	4280	150	150	150	6/12
2M330	3300	4000	4500	5000	2300	4580	2400	4572	4580	4580	150	150	150	6/12
2M350	3500	4000	4500	5000	2400	4780	2500	4772	4780	4780	150	150	150	6/12
2M370	3700	4000	4450	4700	2500	4980	2600	4972	4980	4980	150	150	150	6/6 *6/12
2M400	4000	4000	4350	4500	2700	5380	2800	5272	5380	5380	150	150	150	6/6 *6/12
2M425	4250	3800	4250	4350	2825	5630	2925	5522	5630	5630	150	150	150	6/6 *6/12
2M450	4500	3500	4150	4200	2950	5880	3050	5772	5880	5880	150	150	150	6/6 *6/12
2M500	5000	3200	3700	3800	3200	6380	3300	6272	6380	6380	150	150	150	6/6 *6/6
2M550	5500	2600	3100	3200	3500	6880	3600	6772	6880	6880	150	150	150	*3/6
2M600	6000	2400	2400	2600	3750	7380	3850	7272	7380	7380	150	150	150	*3/6

Note: 1, (\*) represents the load capacity when with double front tyres  
2.The service weight is the weight of truck with dual tyres: +110kg.  
3.Free lift height: 150mm  
4, Max. lifting height (without backrest): 4.0 Ton: -535mm, 4.5Ton and 5.0Ton: -547mm

## 2-Stage Wide-View Full Free Mast

Mast model	Lifting Height H	Load Capacity			Overall Height (Mast Lowered)			Max. Lifting Height (With backrest)			Free Lift			Mast Tilt Angle 4.0-5.0t (α/β)
		4.0t	4.5t	5.0t	4.0t	4.5t	5.0t	4.0t	4.5t	5.0t	4.0t	4.5t	5.0t	
		Q			H1			H2			H3			
2FFM200	2000	4000	4500	5000	1650	175								